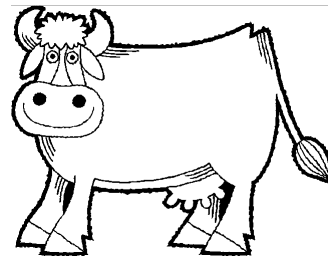
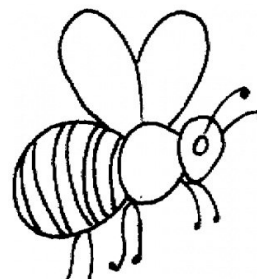


**SOME SURAHS IN THE HOLY QURAN ARE NAMED  
AFTER CREATURES**

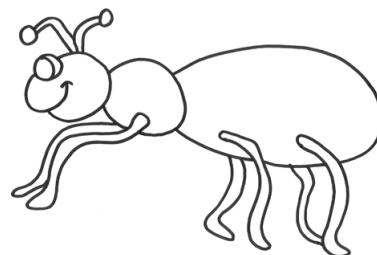
- Al Baqarah (*The Cow*)



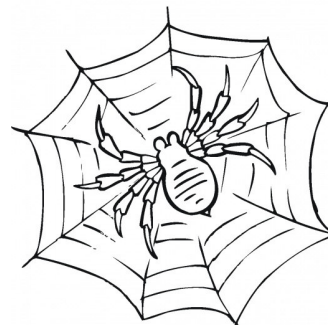
- Al Nahl (*The Bees*)



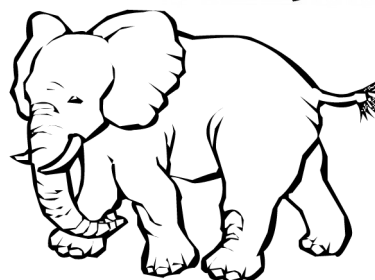
- Al Naml (*The Ant*)



- Ankaboot (*Spider*)

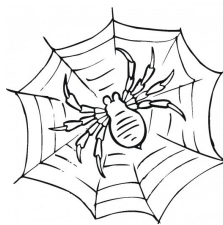


- Al Fil (*The Elephant*)

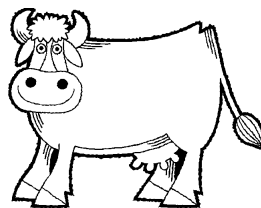


## MATCH SURAH NAMES TO CREATURES

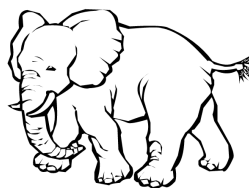
- Al Baqarah



- Al Nahl



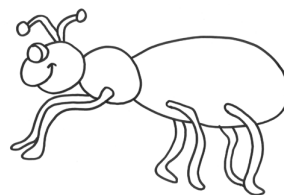
- Al Naml



- Ankaboot



- Al Fil



*Recite a Salawat for The Ahlul-Bayt and share what you have learnt today with your parents.*